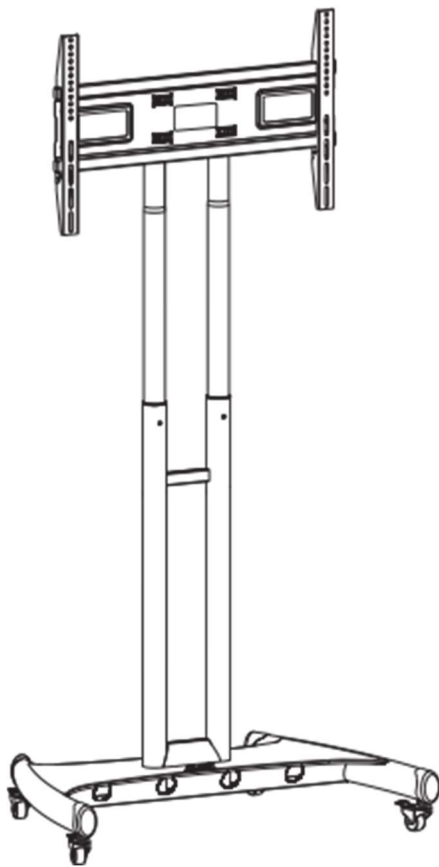
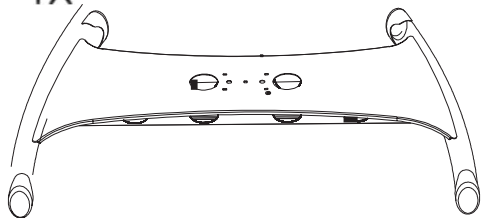


# Installation Manual

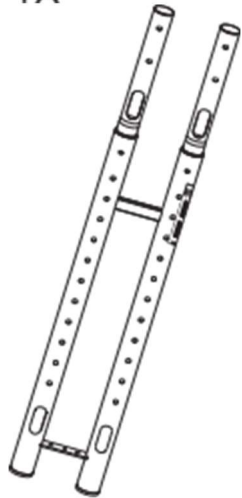


Stand Components

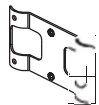
1X



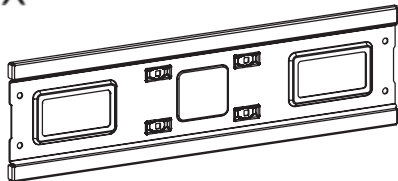
1X



1X



1X



4X



2X



2X



4X



2X



2X



2X



A1

4X



M8x60mm

A2

30X



M6x10mm

A3

4X



M8x26mm

A4

4X



M8x70mm

A5

2X



M5x12mm

2X



A6

4X



Φ16.5×Φ12.5×2mm

B1

1X



M8

B2

1X



M6

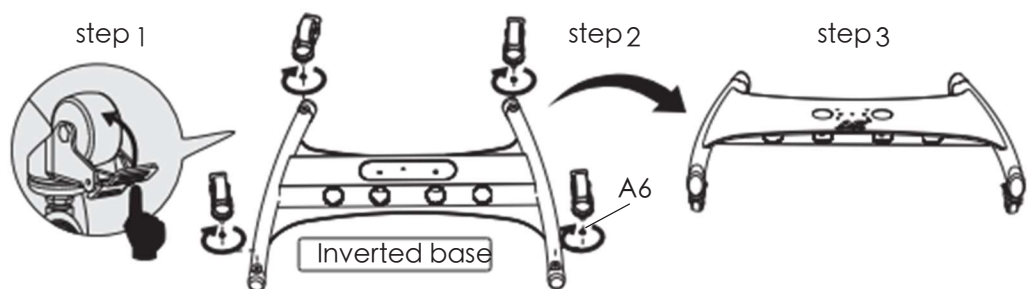
A7

4X

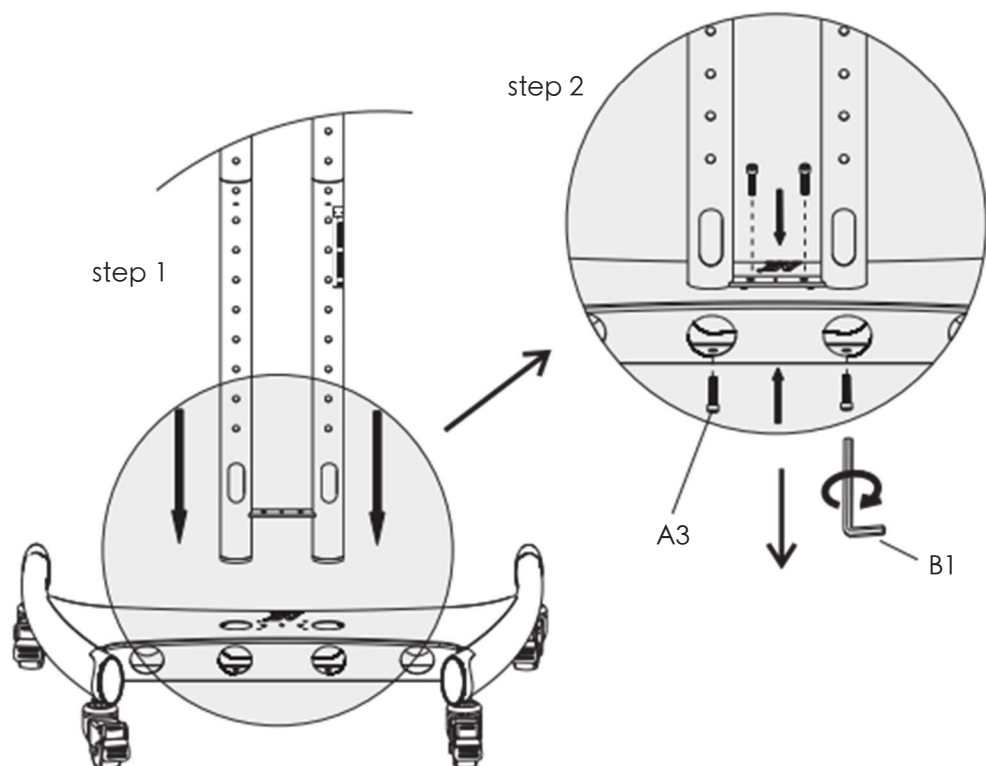


M8

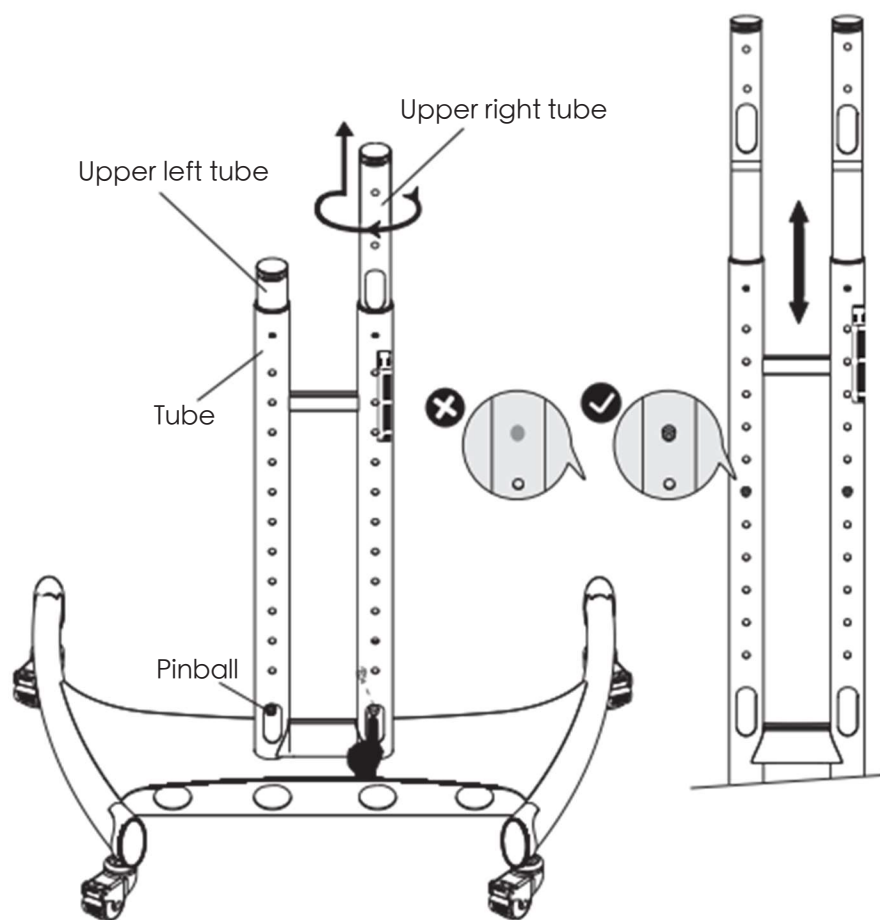
## 1. Installation steps of base and wheels



## 2. Installation steps of base and joint tube

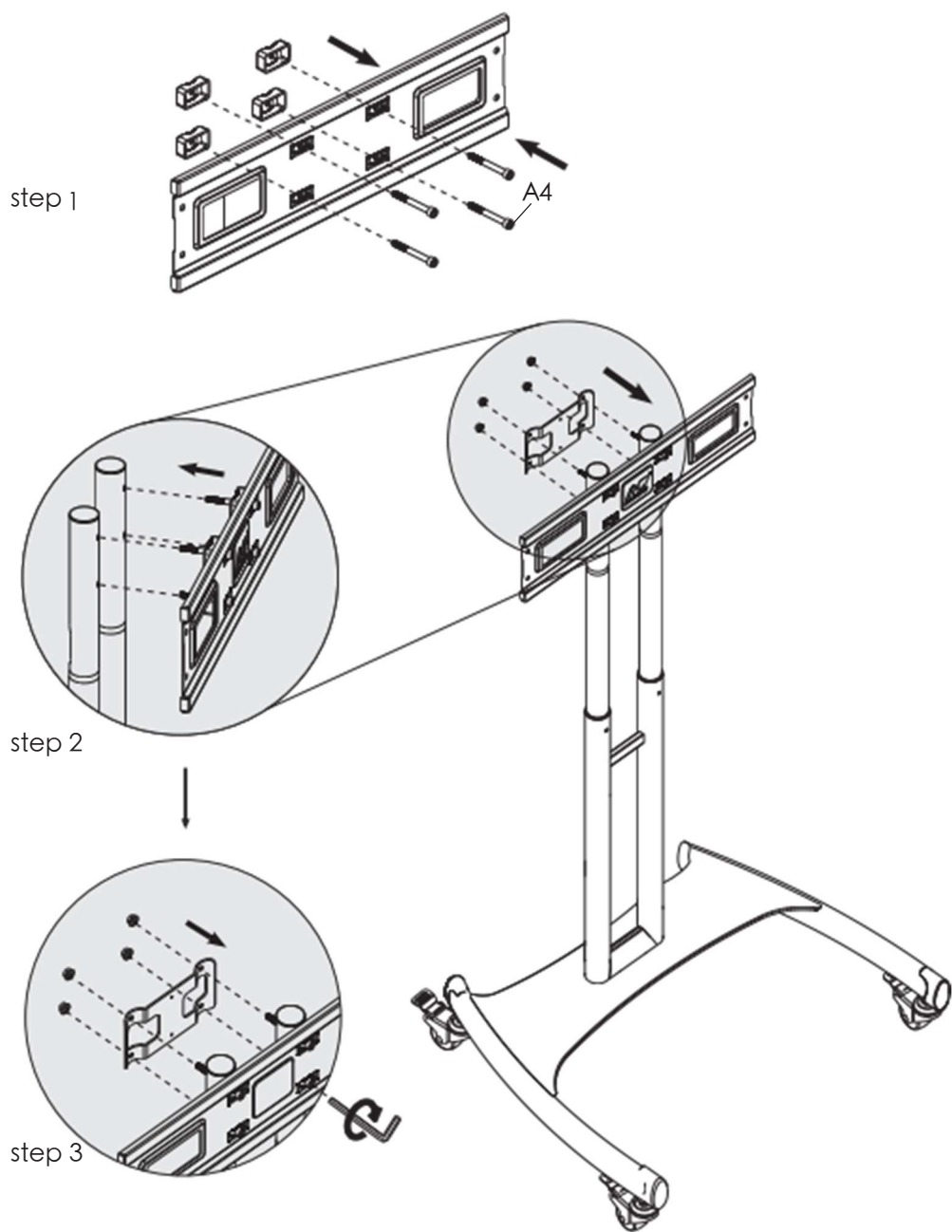


### 3. Tube adjustment step from top to bottom

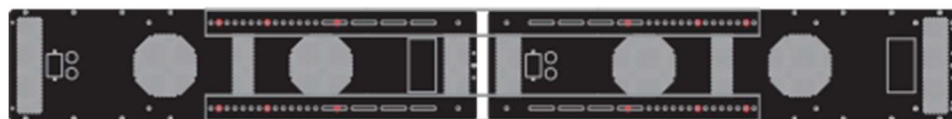
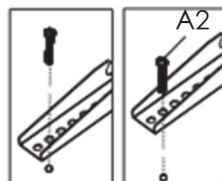
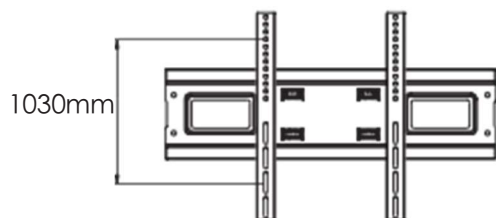




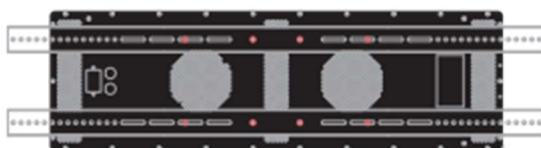
#### 4. Installation step of hanging board



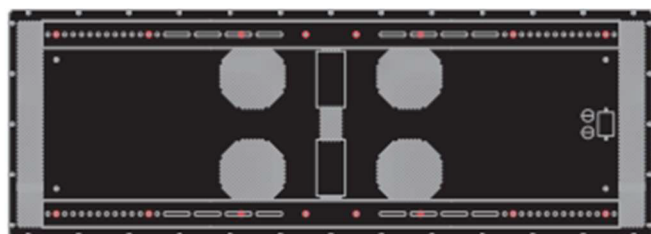
## 5. Joint structure of panels



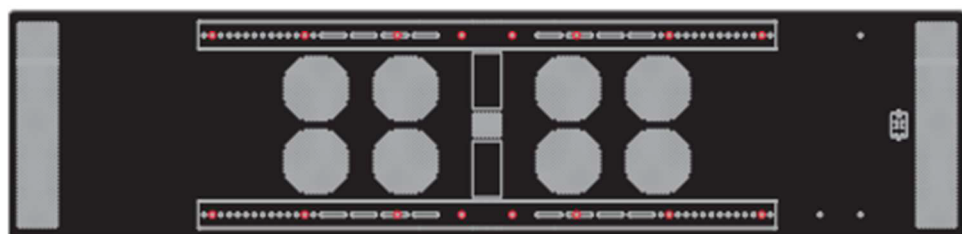
BP210



BP300

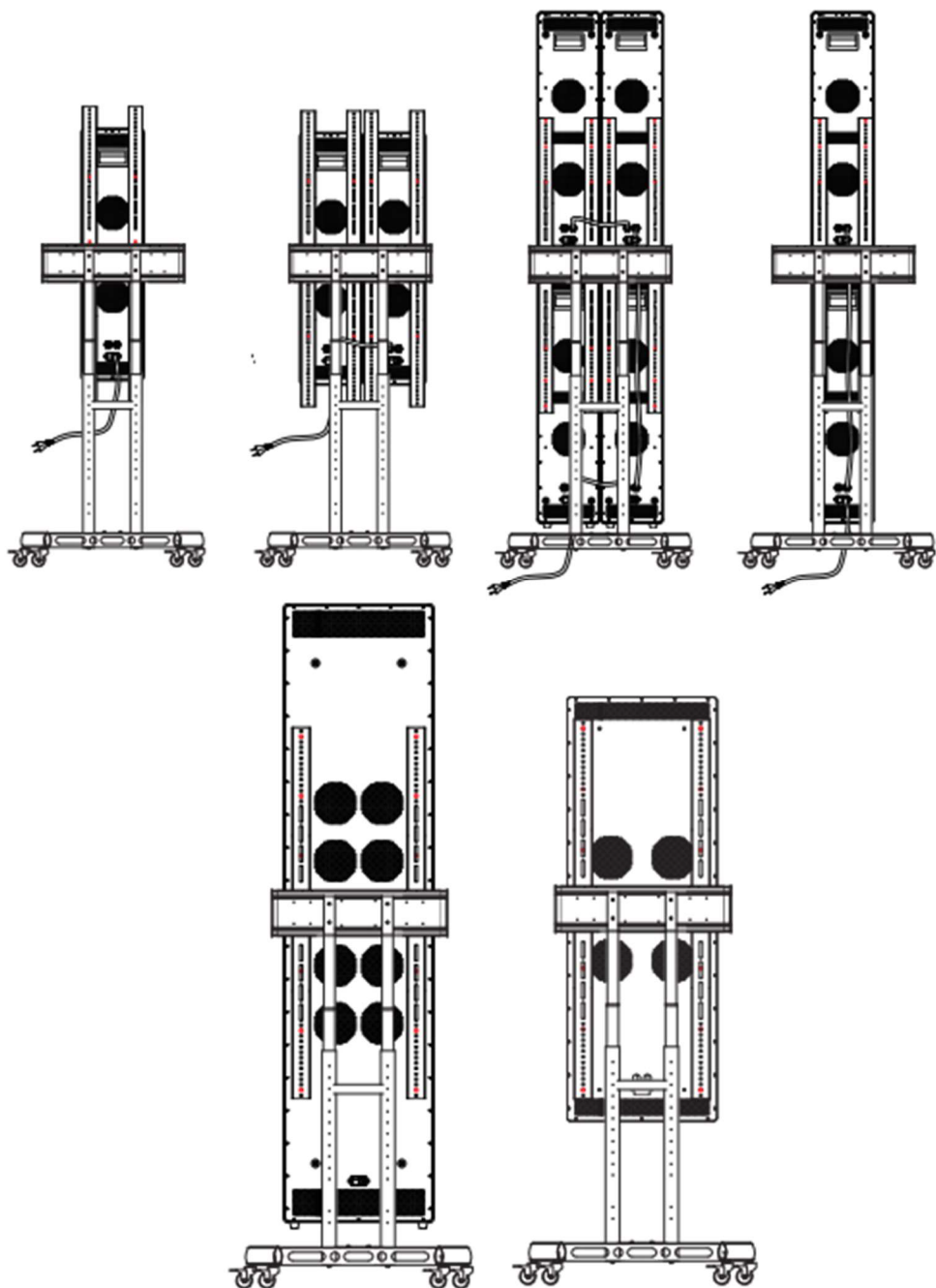


BP560



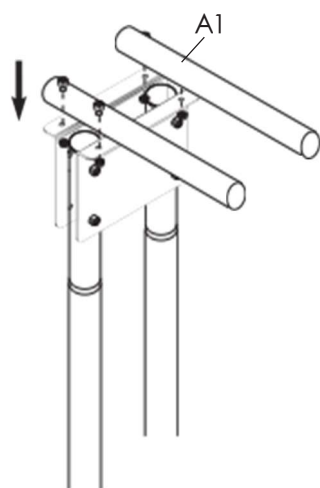
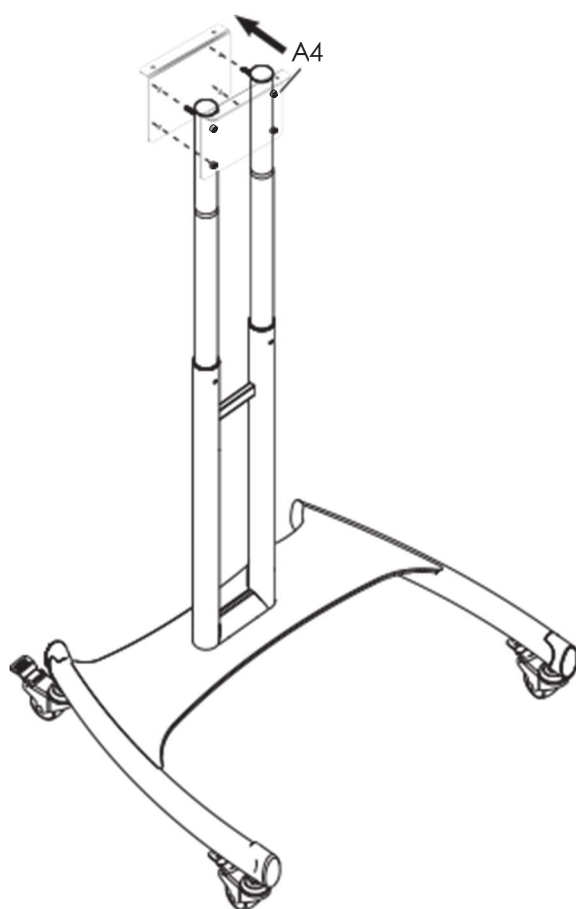
BP840

## 6. Panels and bracket combination



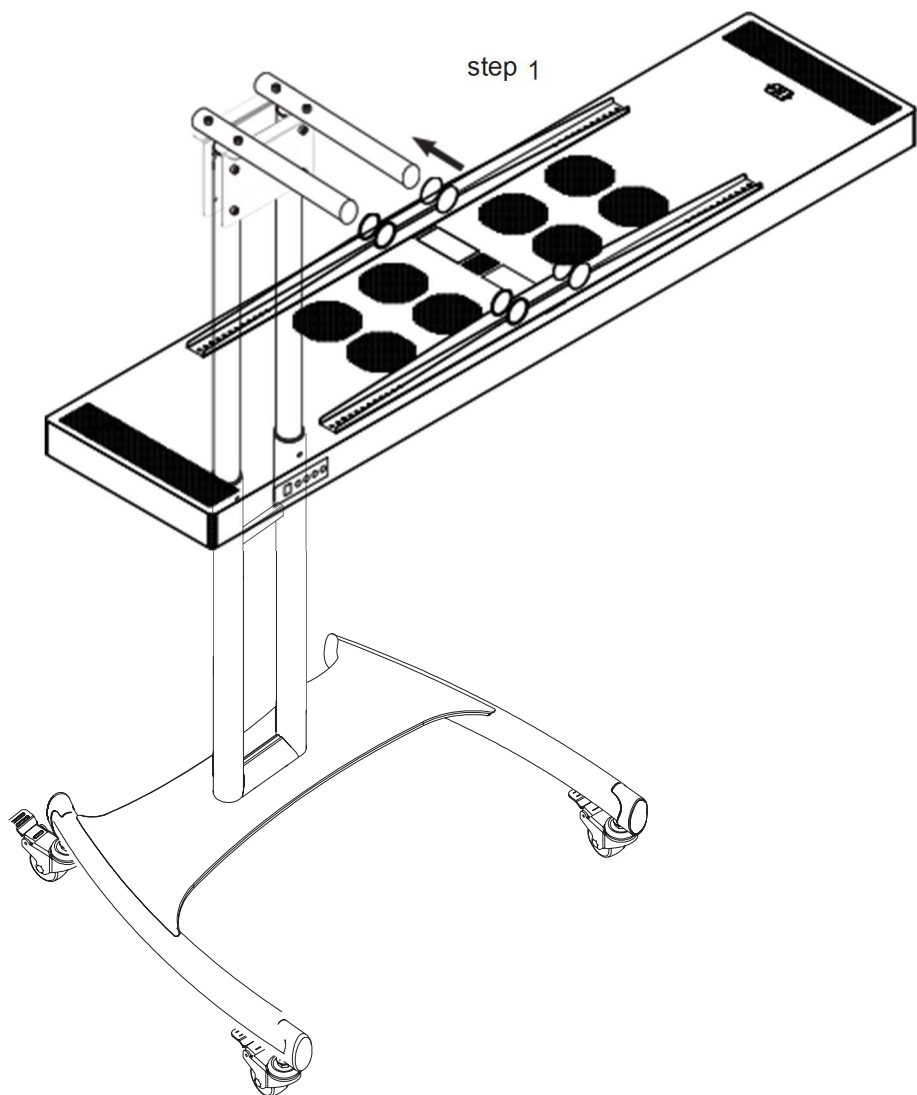
## 7. Assembly steps for horizontal hanging

step 1

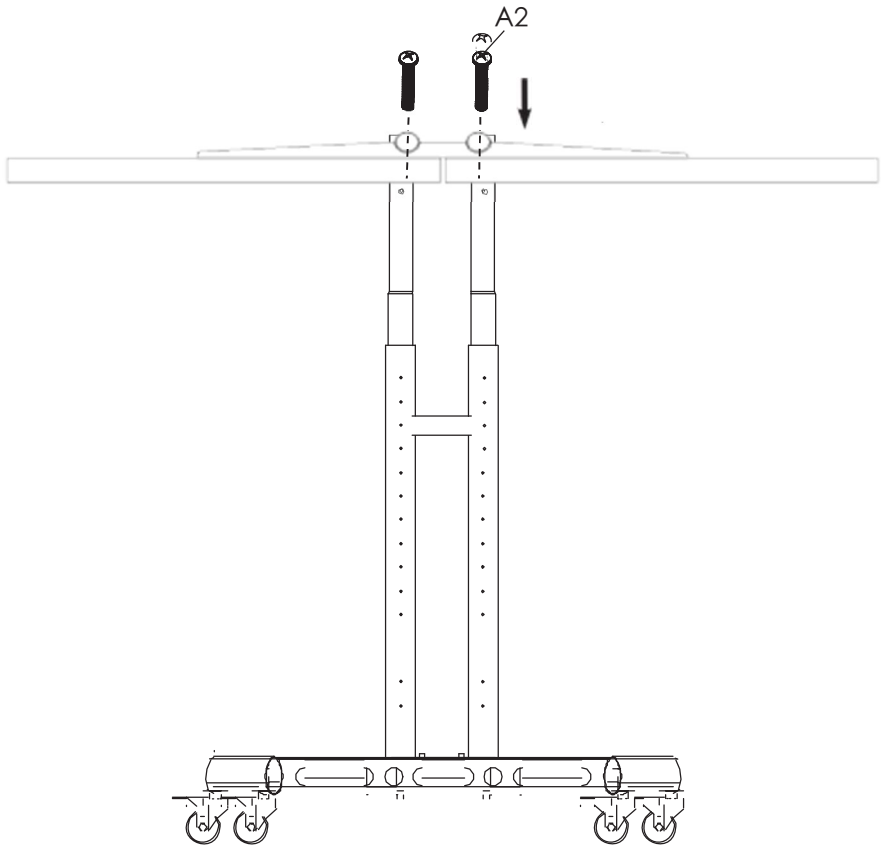


step 2

## 8. Assemble panels



## 9. Final fixing with screws



**Notes:** Fix the middle-sized panels BP210 and BP300 in the inner holes to ensure more stability. It was like the photo shown.

